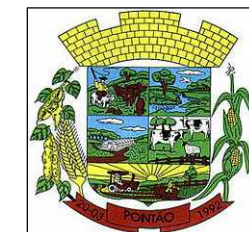


PREFEITURA MUNICIPAL DE PONTÃO



PROJETO PISCINA
COMUNITÁRIA DE
PONTÃO

AVENIDA JÚLIO MAILHOS, 1613
99190-000 - PONTÃO-RS
(54) 3308-1900

PRANCHA:
COBERTURA

LOCAL:
TRAVESSA JOAQUIM BORGES
ANTIGAMENTE DENOMINADA RUA 5
MUNICÍPIO DE PONTÃO-RS

ÁREA:
413,80m²

DATA:
JULHO/2022

ESCALA:

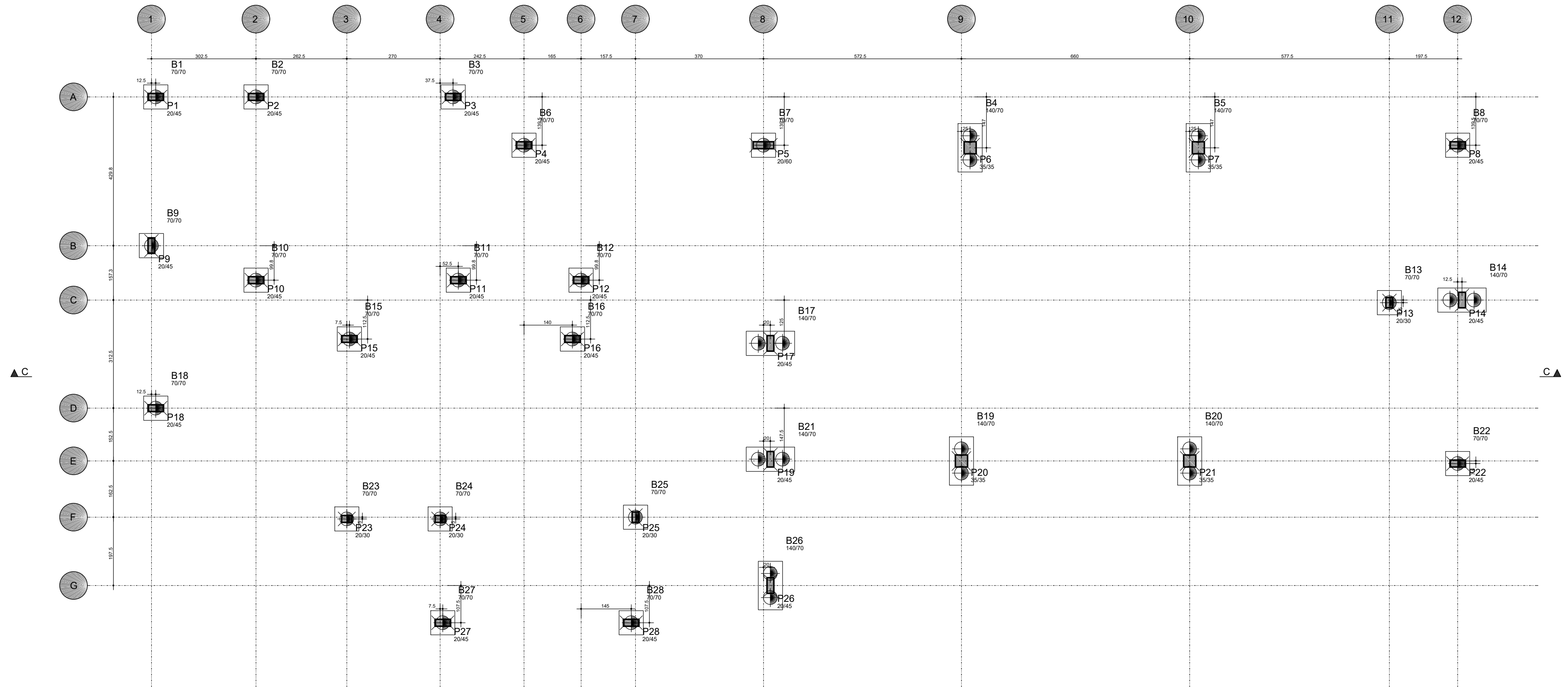
Nº:
01/12

PROPRIETÁRIO:

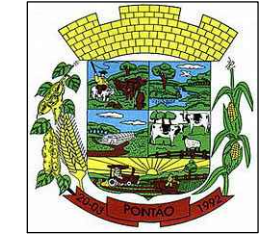
VELTON VICENTE HAHN
PREFEITO MUNICIPAL

RESP. TÉCNICO:

ENG. CIVIL: SILVIO MARQUES DE FARIAS
CREA RS 208.374
silviomfarias@gmail.com
FONE: 51 9 9742 1877



PREFEITURA MUNICIPAL DE PONTÃO



PROJETO PISCINA
COMUNITÁRIA DE
PONTÃO

AVENIDA JÚLIO MAILHOS, 1613
99190-000 - PONTÃO-RS
(54) 3308-1900

PRANCHA:
FUNDAÇÃO

LOCAL:
TRAVESSA JOAQUIM BORGES
ANTIGAMENTE DENOMINADA RUA 5
MUNICÍPIO DE PONTÃO-RS

ÁREA:
413,80m²

DATA:
JULHO/2022

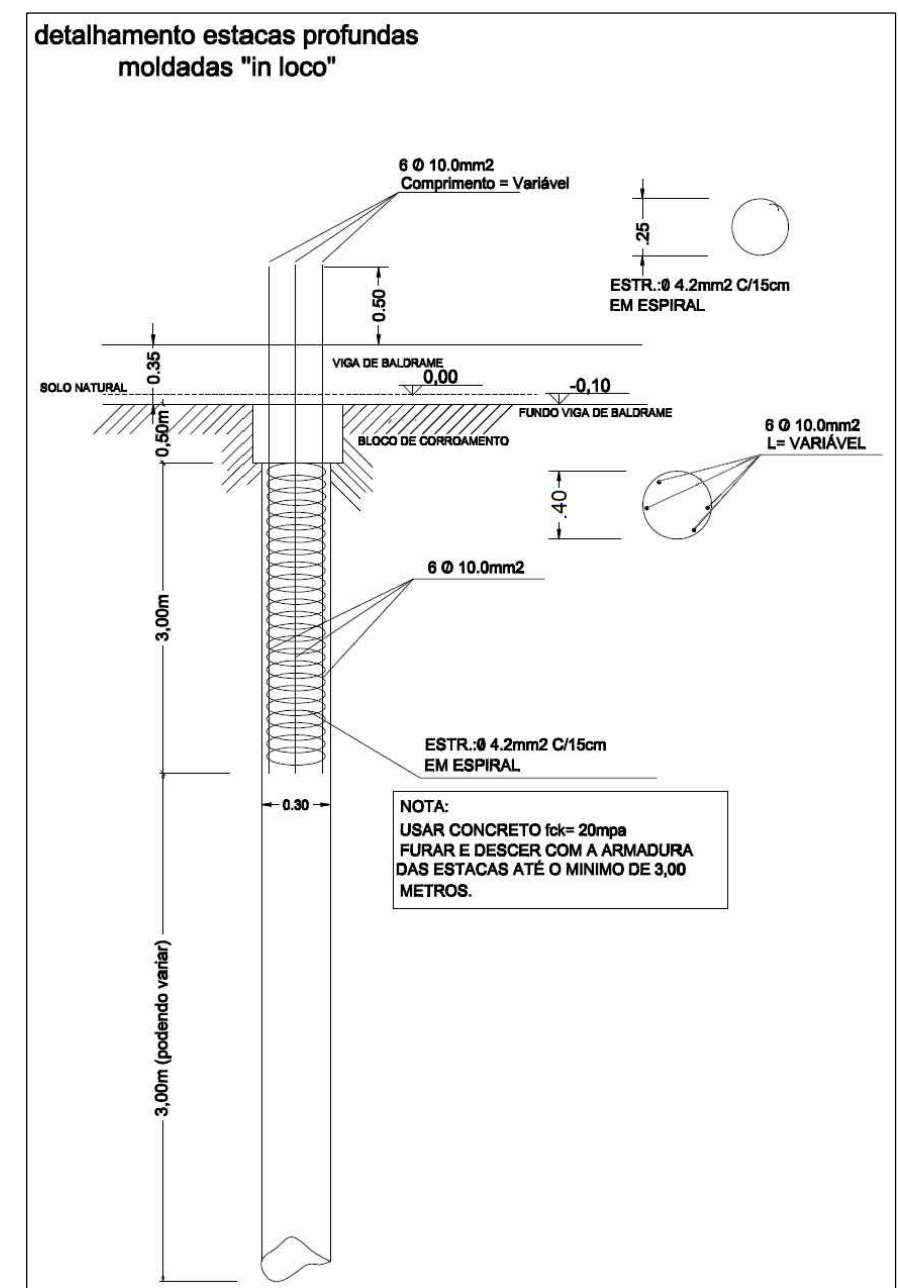
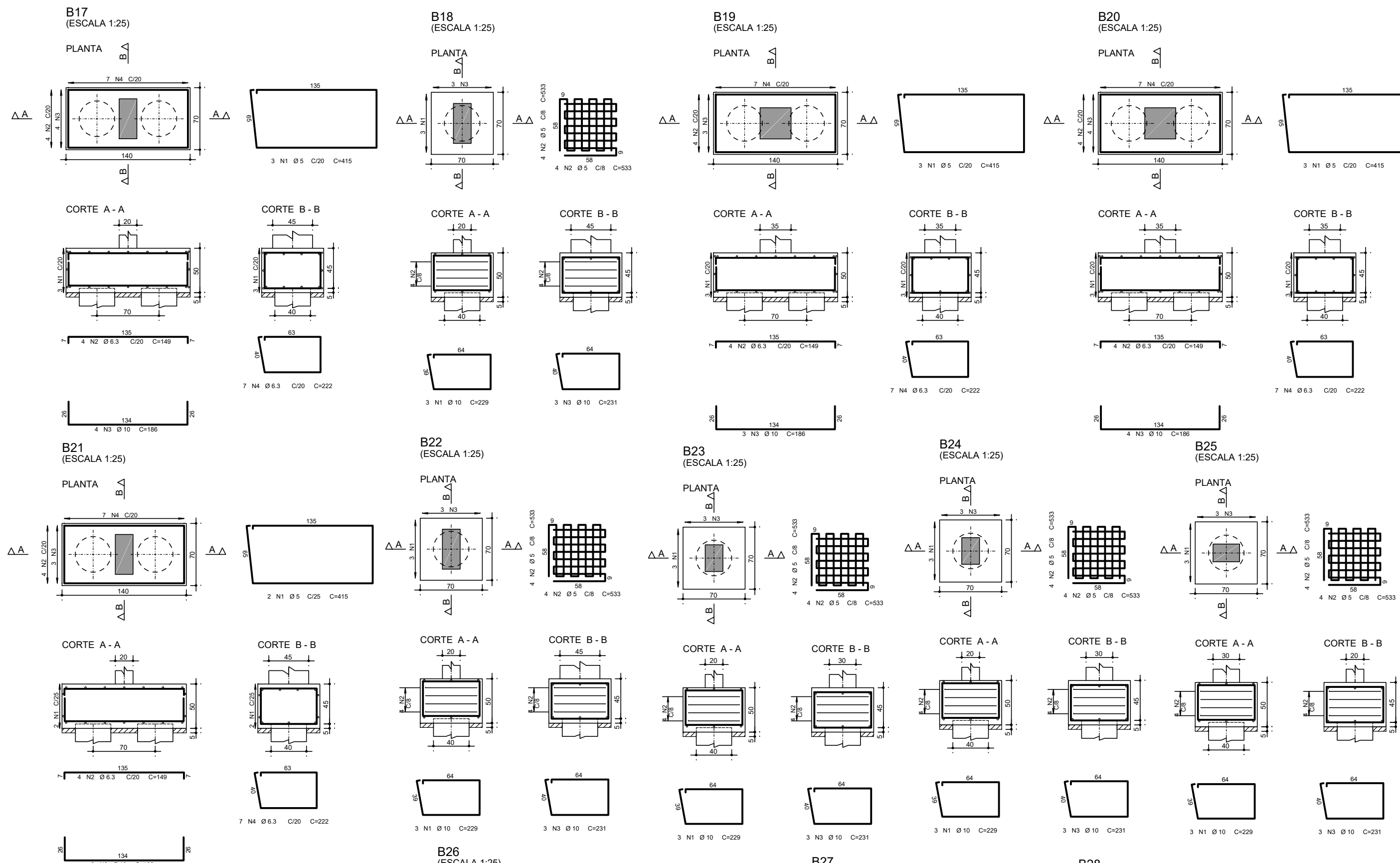
PROPRIETÁRIO:

VELTON VICENTE HAHN
PREFEITO MUNICIPAL

RESP. TÉCNICO:

ENG. CIVIL: SILVIO MARQUES DE FARIAS
CREA RS 208.374
silviomfarias@gmail.com
FONE: 51 9 9742 1877

ESCALA:
Nº:
02/12



NOTA:
USAR CONCRETO fck= 20mpa
FURAR E DESER COM A ARMADURA
DAS ESTACAS ATÉ O MÍNIMO DE 3,00
METROS.

ÁÇO	POS	BIT (mm)	QUANT	COMPRIMENTO (cm)	UNIT (cm)	TOTAL (cm)
B17						
60B	1	5	3	415	1245	
50A	2	6.3	4	149	596	
50A	3	10	4	186	744	
50A	4	6.3	7	222	1554	
B18						
50A	1	10	3	229	687	
60B	2	5	8	533	4264	
50A	3	10	3	231	693	
B19						
60B	1	5	3	415	1245	
50A	2	6.3	4	149	596	
50A	3	10	3	186	558	
50A	4	6.3	7	222	1554	
B20						
60B	1	5	3	415	1245	
50A	2	6.3	4	149	596	
50A	3	10	4	186	744	
50A	4	6.3	7	222	1554	
B21						
60B	1	5	2	415	830	
50A	2	6.3	4	149	596	
50A	3	10	3	186	558	
50A	4	6.3	7	222	1554	
B22						
50A	1	10	3	229	687	
60B	2	5	8	533	4264	
50A	3	10	3	231	693	
B23						
50A	1	10	3	229	687	
60B	2	5	8	533	4264	
50A	3	10	3	231	693	
B24						
50A	1	10	3	229	687	
60B	2	5	8	533	4264	
50A	3	10	3	231	693	
B25						
50A	1	10	3	229	687	
60B	2	5	8	533	4264	
50A	3	10	3	231	693	
B26						
60B	1	5	2	415	830	
50A	2	6.3	4	149	596	
50A	3	10	3	186	558	
50A	4	6.3	7	222	1554	
B27						
50A	1	10	3	229	687	
60B	2	5	8	533	4264	
50A	3	10	3	231	693	
B28						
50A	1	10	3	229	687	
60B	2	5	8	533	4264	
50A	3	10	3	231	693	

RESUMO AÇO CA 50-60			
ÁÇO	BIT (mm)	COMPR (m)	PESO (kg)
60B	5	352	54
50A	6.3	106	26
50A	10	128	79
Peso Total 60B =			54 kg
Peso Total 50A =			105 kg



PREFEITURA MUNICIPAL DE PONTÃO
PROJETO PISCINA
COMUNITÁRIA DE
PONTÃO
AVENIDA JÚLIO MAILHOS, 1613
99190-000 - PONTÃO-RS
(54) 3308-1900

PRANCHA: FUNDAÇÃO
B17 / B18 / B19 / B20
B21 / B22 / B23 / B24
B25 / B26 / B27 / B28
DETALHAMENTO ESTACAS

LOCAL:
TRAVESSA JOAQUIM BORGES
ANTIGAMENTE DENOMINADA RUA 5
MUNICÍPIO DE PONTÃO-RS

ÁREA:
413,80m²

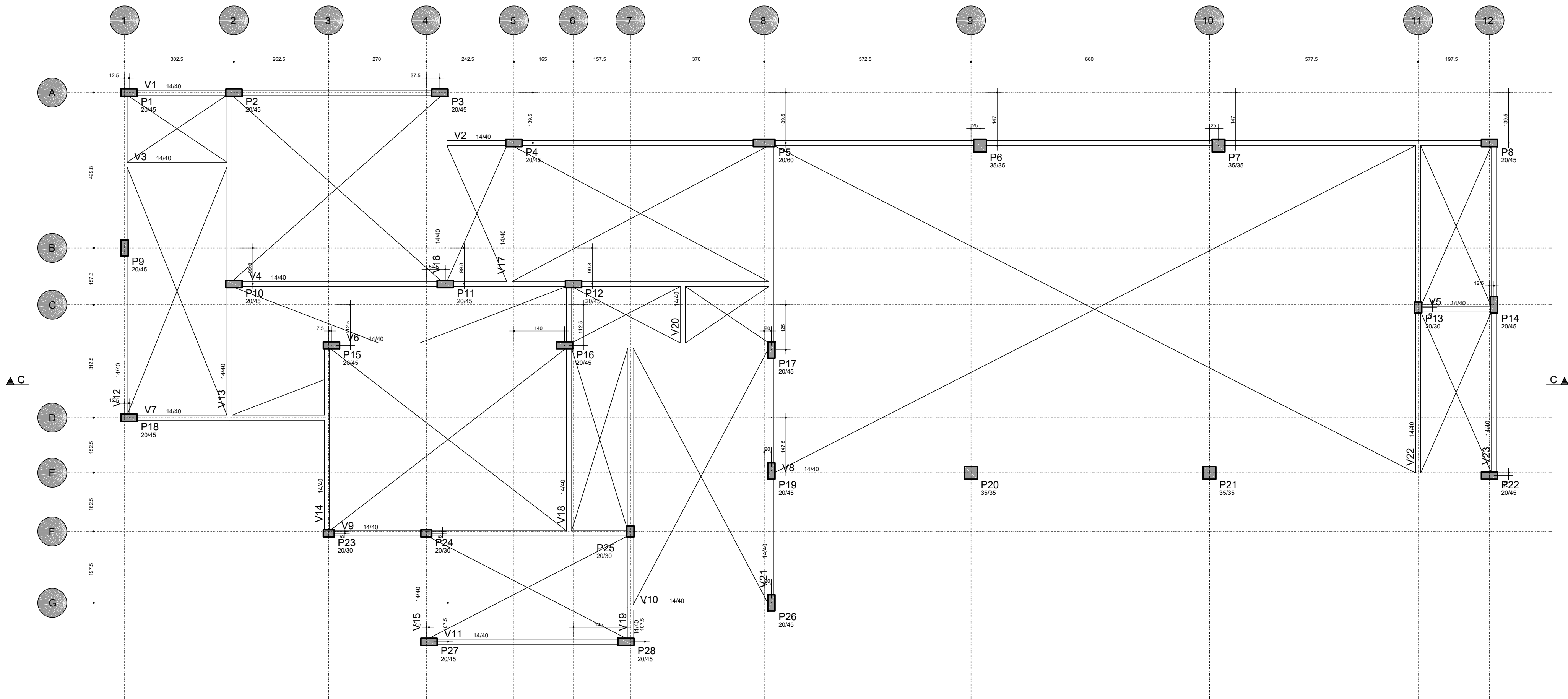
DATA:
JULHO/2022

ESCALA:

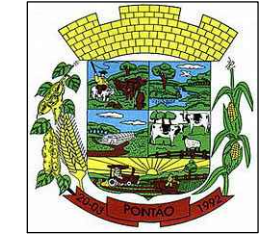
PROPRIETÁRIO:
VELTON VICENTE HAHN
PREFEITO MUNICIPAL

RESP. TÉCNICO:
ENG. CIVIL: SÍLVIO MARQUES DE FARIAS
CREA RS 208.374
silvionfarias@gmail.com
FONE: 51 9 9742 1877

Nº:
04/12



PREFEITURA MUNICIPAL DE PONTÃO



PROJETO PISCINA
COMUNITÁRIA DE
PONTÃO

AVENIDA JÚLIO MAILHOS, 1613
99190-000 - PONTÃO-RS
(54) 3308-1900

PROPRIETÁRIO:

VELTON VICENTE HAHN
PREFEITO MUNICIPAL

RESP. TÉCNICO:

ENG. CIVIL: SILVIO MARQUES DE FARIAS
CREA RS 208.374
silviomfarias@gmail.com
FONE: 51 9 9742 1877

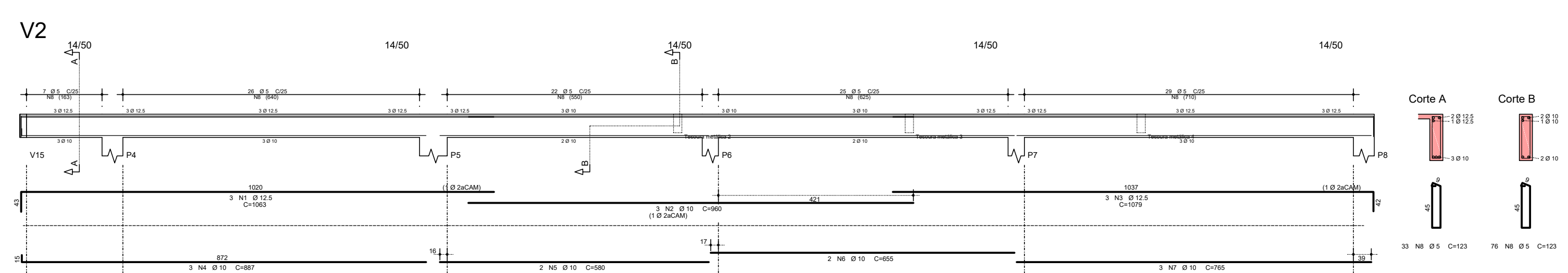
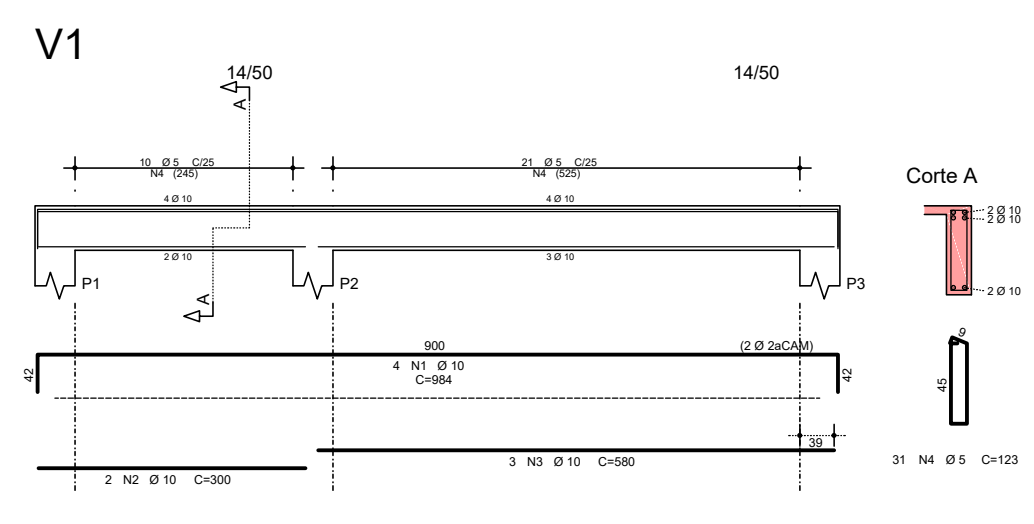
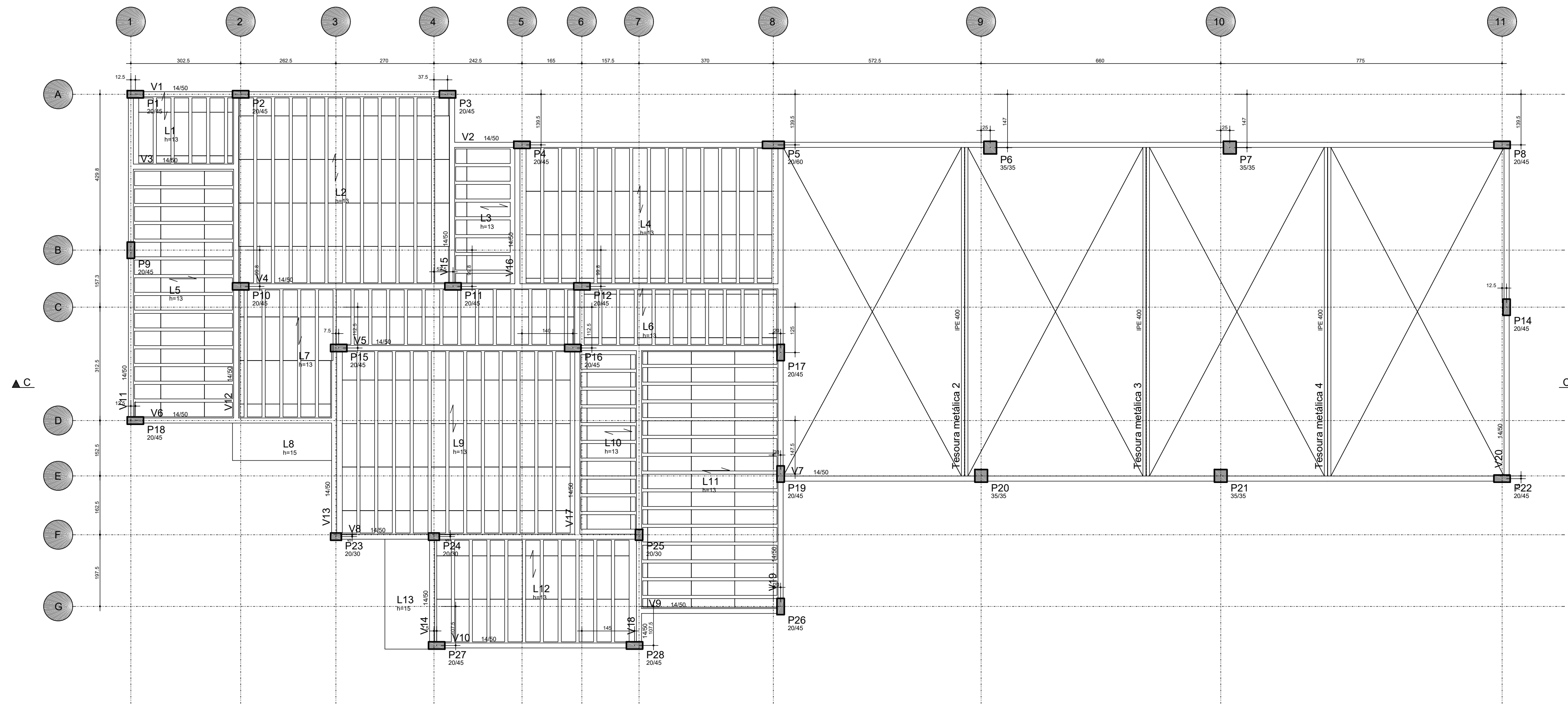
PRANCHA:
TERREO

LOCAL:
TRAVESSA JOAQUIM BORGES
ANTIGAMENTE DENOMINADA RUA 5
MUNICÍPIO DE PONTÃO-RS

ÁREA:
413,80m²

DATA:
JULHO/2022

ESCALA:
Nº:
05/12



ÁÇO	POS	BIT (mm)	QUANT	COMPRIENTO UNIT (cm)	TOTAL (cm)
V1					
50A	1	10	4	984	3936
50A	2	10	2	300	600
50A	3	10	3	580	1740
60B	4	5	31	123	3813
V2					
50A	1	12.5	3	1063	3189
50A	2	10	3	960	2880
50A	3	12.5	3	1079	3237
50A	4	10	3	887	2661
50A	5	10	2	580	1160
50A	6	10	3	655	1965
50A	7	10	3	765	2295
60B	8	5	109	123	13407

RESUMO AÇO CA 50-60			
ÁÇO	BIT (mm)	COMPR (m)	PESO (kg)
60B	5	172	27
50A	10	166	102
50A	12.5	64	62
Peso Total 60B =			27 kg
Peso Total 50A =			164 kg



PREFEITURA MUNICIPAL DE PONTÃO
PROJETO PISCINA COMUNITÁRIA DE PONTÃO
 AVENIDA JÚLIO MAILHOS, 1613
 99190-000 - PONTÃO-RS
 (54) 3308-1900

PRANCHA: COBERTURA V1 / V2

LOCAL:
 TRAVESSA JOAQUIM BORGES
 ANTIGAMENTE DENOMINADA RUA 5
 MUNICÍPIO DE PONTÃO-RS

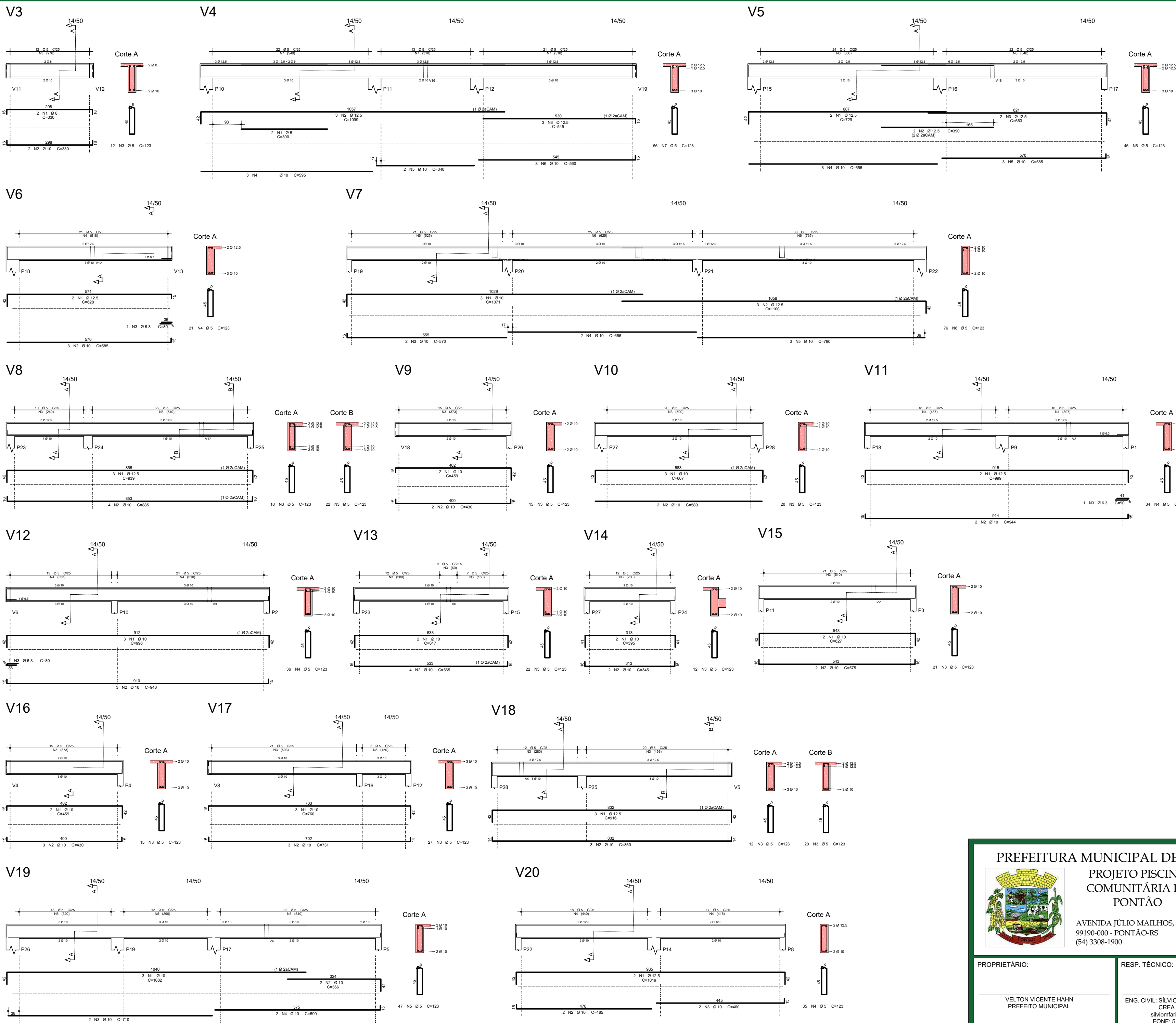
ÁREA:
 413,80m²

DATA:
 JULHO/2022

ESCALA:
 Nº: 08/12

PROPRIETÁRIO:
 VELTON VICENTE HAHN
 PREFEITO MUNICIPAL

RESP. TÉCNICO:
 ENG. CIVIL: SÍLVIO MARQUES DE FARIAS
 CREA RS 208.374
 silviomfarias@gmail.com
 FONE: 51 9 9742 1877



AÇO	POS	BIT (mm)	QUANT	COMPRIMENTO	
				UNIT (cm)	TOTAL (cm)
V3					
50A	1	8	2	330	660
50A	2	10	2	330	660
60B	3	5	12	123	1476
V4					
60B	1	5	2	300	600
50A	2	12,5	3	1099	3297
50A	3	12,5	3	545	1635
50A	4	10	3	595	1785
50A	5	10	2	340	680
50A	6	10	3	560	1680
60B	7	5	56	123	6888
V5					
50A	1	12,5	2	729	1458
50A	2	12,5	2	390	780
50A	3	12,5	2	663	1326
50A	4	10	3	655	1965
50A	5	10	3	585	1755
60B	6	5	46	123	5658
V6					
50A	1	12,5	2	628	1256
50A	2	10	3	585	1755
50A	3	6,3	1	80	80
60B	4	5	21	123	2583
V7					
50A	1	10	3	1071	3213
50A	2	12,5	3	1100	3300
50A	3	10	2	570	1140
50A	4	10	2	655	1310
50A	5	10	3	790	2370
60B	6	5	76	123	9348
V8					
50A	1	12,5	3	939	2817
50A	2	10	4	885	3540
60B	3	5	32	123	3936
V9					
50A	1	10	2	459	918
50A	2	10	2	430	860
60B	3	5	15	123	1845
V10					
50A	1	10	3	667	2001
50A	2	10	2	580	1160
60B	3	5	20	123	2460
V11					
50A	1	12,5	2	999	1998
50A	2	10	2	944	1888
50A	3	6,3	1	90	90
60B	4	5	34	123	4182
V12					
50A	1	10	3	996	2988
50A	2	10	3	940	2820
50A	3	6,3	1	80	80
60B	4	5	36	123	4428
V13					
50A	1	10	2	617	1234
50A	2	10	4	565	2260
60B	3	5	22	123	2706
V14					
50A	1	10	2	395	790
50A	2	10	2	345	690
60B	3	5	12	123	1476
V15					
50A	1	10	2	627	1254
50A	2	10	2	575	1150
60B	3	5	21	123	2583
V16					
50A	1	10	2	459	918
50A	2	10	3	430	1290
60B	3	5	15	123	1845
V17					
50A	1	10	3	760	2280
50A	2	10	3	731	2193
60B	3	5	27	123	3321
V18					
50A	1	12,5	3	916	2748
50A	2	10	3	860	2580
60B	3	5	32	123	3936
V19					
50A	1	10	3	1082	3246
50A	2	10	2	366	732
50A	3	10	2	710	1420
50A	4	10	2	590	1180
60B	5	5	47	123	5781
V20					
50A	1	12,5	2	1019	2038
50A	2	10	2	485	970
50A	3	10	2	460	920
60B	4	5	35	123	4305

RESUMO AÇO CA 50-60			
AÇO	BIT (mm)	COMPR (m)	PESO (kg)
60B	5	694	107
50A	6,3	3	1
50A	8	7	3
50A	10	566	368
50A	12,5	227	218
Peso Total 60B =		107 kg	
Peso Total 50A =		589 kg	



PREFEITURA MUNICIPAL DE PONTÃO
PROJETO PISCINA COMUNITÁRIA DE PONTÃO
 AVENIDA JÚLIO MAILHOS, 1613
 99190-000 - PONTÃO-RS
 (54) 3308-1900

PRANCHA: COBERTURA
 V3 / V4 / V5 / V6 / V7
 V8 / V9 / V10 / V11 / V12
 V13 / V14 / V15 / V16
 V17 / V18 / V19 / V20

LOCAL:
 TRAVESSA JOAQUIM BORGES
 ANTIGAMENTE DENOMINADA RUA 5
 MUNICÍPIO DE PONTÃO-RS

ÁREA: 413,80m²

DATA:
 JULHO/2022

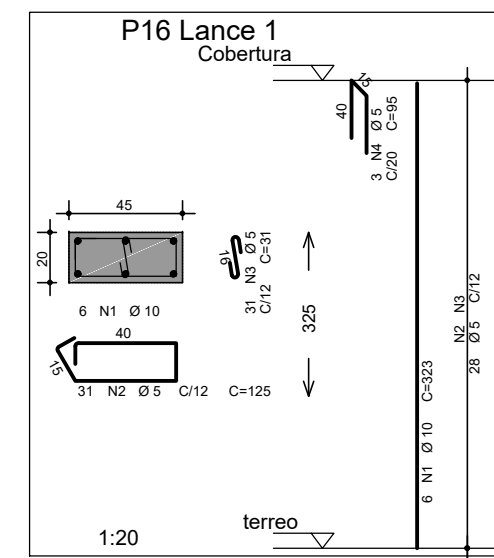
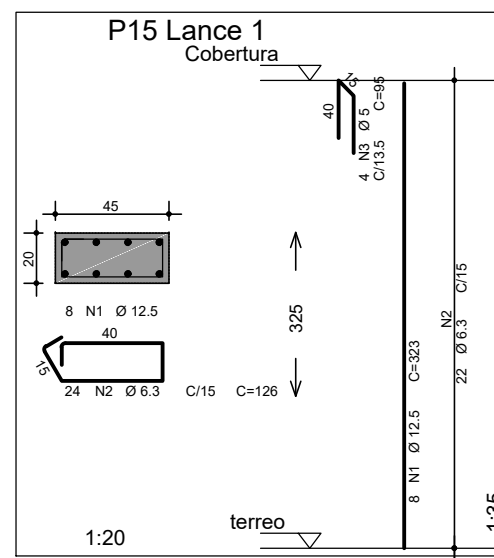
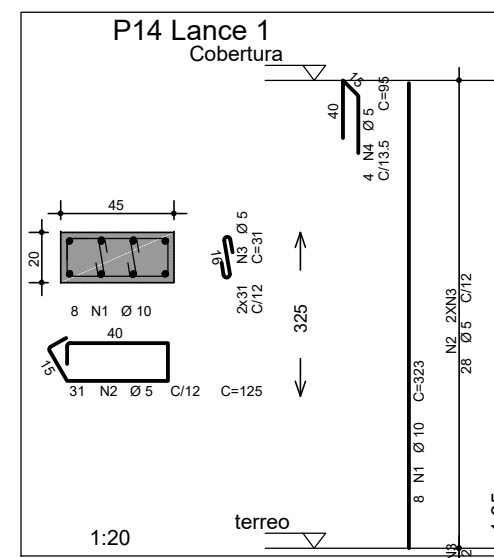
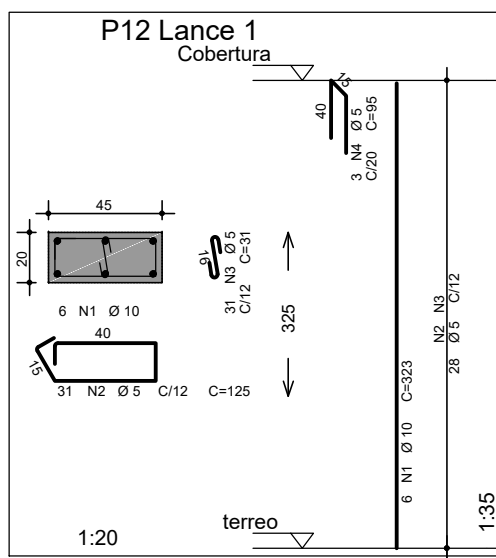
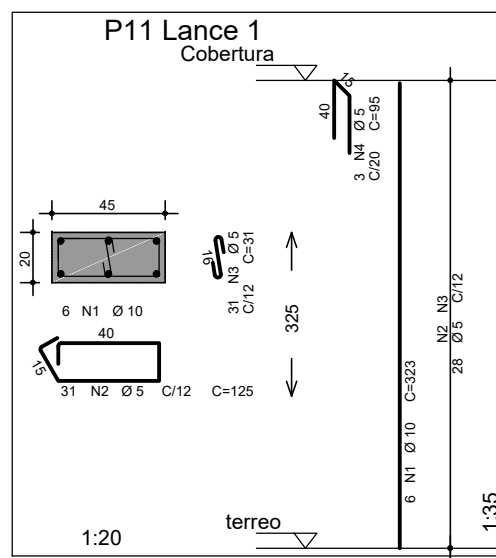
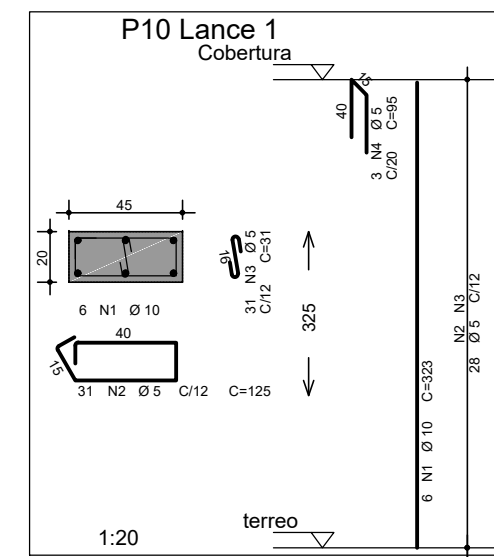
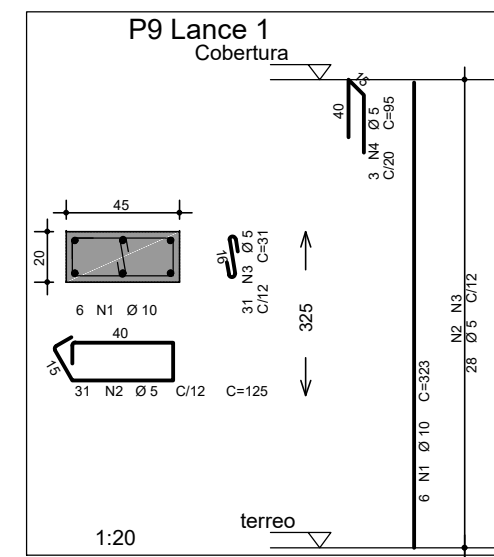
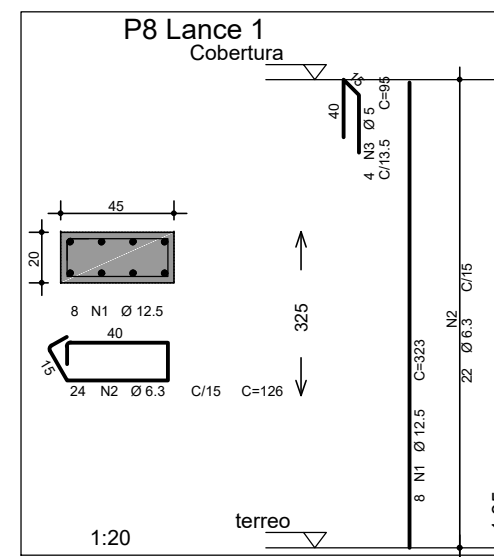
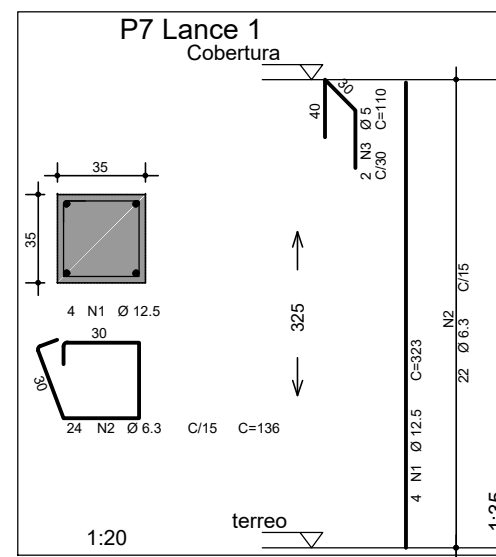
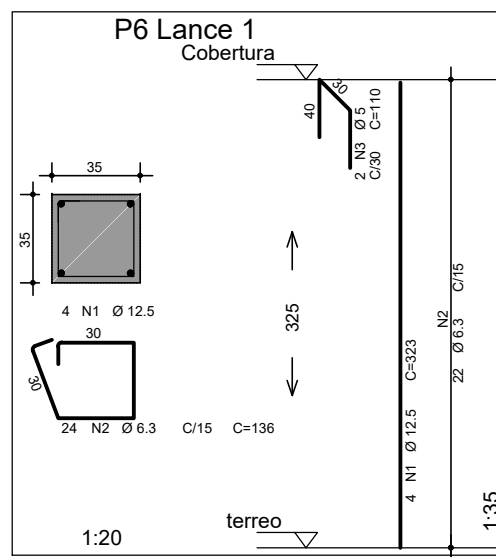
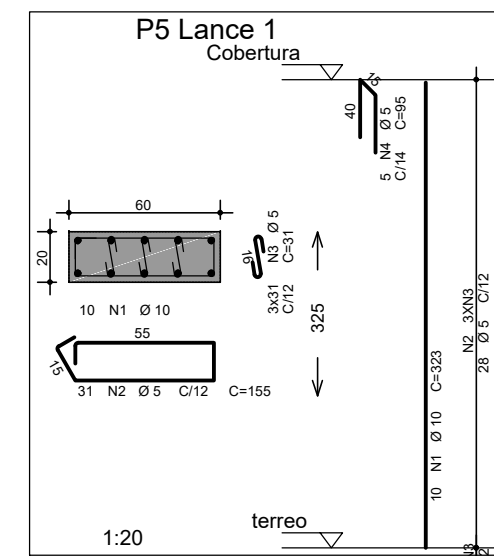
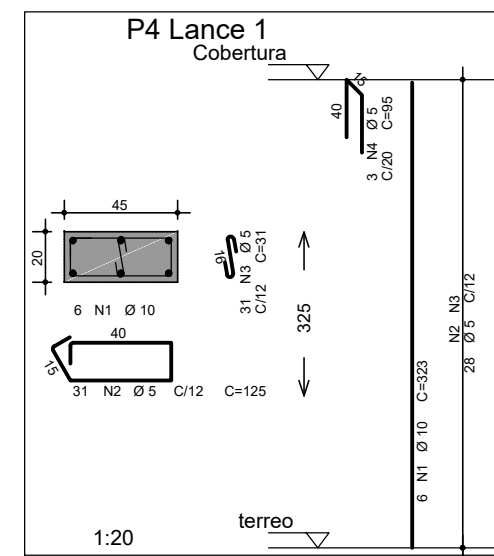
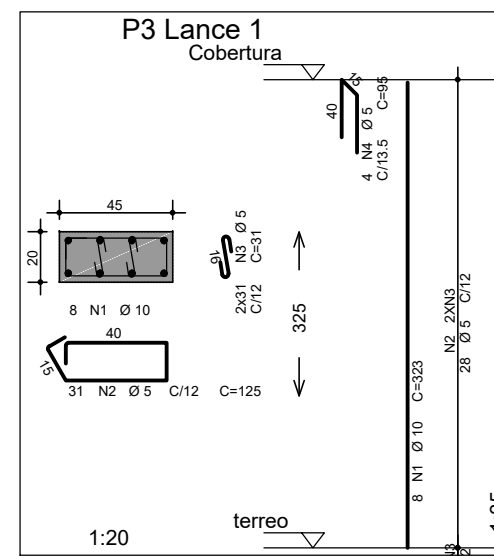
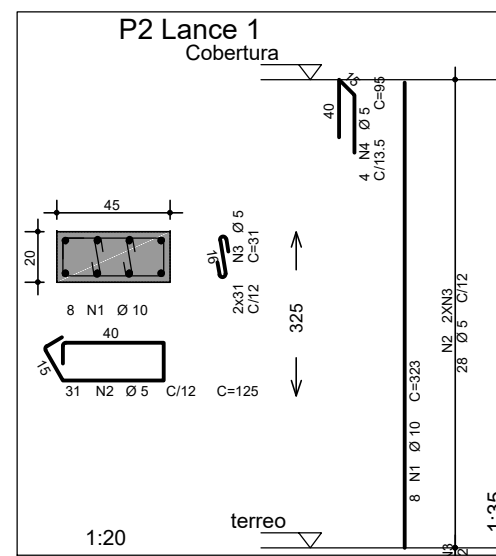
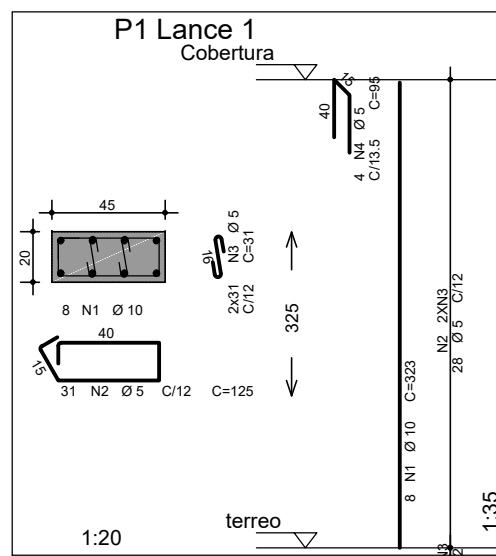
ESCALA: N^o:
 09/12

PROPRIETÁRIO:
 VELTON VICENTE HAHN
 PREFEITO MUNICIPAL

RESP. TÉCNICO:
 ENG. CIVIL: SÍLVIO MARQUES DE FARIAS
 CREA RS 208.374
 silvionfarias@gmail.com
 FONE: 51 9 9742 1877

AÇO	POS	BIT (mm)	QUANT	COMPRIMENTO	
				UNIT (cm)	TOTAL (cm)
P1 Lance 1					
50A	1	10	8	323	2584
60B	2	5	31	125	3875
60B	3	5	62	31	1922
60B	4	5	4	95	380
P2 Lance 1					
50A	1	10	8	323	2584
60B	2	5	31	125	3875
60B	3	5	62	31	1922
60B	4	5	4	95	380
P3 Lance 1					
50A	1	10	8	323	2584
60B	2	5	31	125	3875
60B	3	5	62	31	1922
60B	4	5	4	95	380
P4 Lance 1					
50A	1	10	6	323	1938
60B	2	5	31	125	3875
60B	3	5	31	31	961
60B	4	5	3	95	285
P5 Lance 1					
50A	1	10	10	323	3230
60B	2	5	31	155	4805
60B	3	5	63	31	2883
60B	4	5	5	95	475
P6 Lance 1					
50A	1	12,5	4	323	1292
50A	2	6,3	24	136	3264
60B	3	5	2	110	220
P7 Lance 1					
50A	1	12,5	4	323	1292
50A	2	6,3	24	136	3264
60B	3	5	2	110	220
P8 Lance 1					
50A	1	12,5	8	323	2584
50A	2	6,3	24	126	3024
60B	3	5	4	95	380
P9 Lance 1					
50A	1	10	6	323	1938
60B	2	5	31	125	3875
60B	3	5	31	31	961
60B	4	5	3	95	285
P10 Lance 1					
50A	1	10	6	323	1938
60B	2	5	31	125	3875
60B	3	5	31	31	961
60B	4	5	3	95	285
P11 Lance 1					
50A	1	10	6	323	1938
60B	2	5	31	125	3875
60B	3	5	31	31	961
60B	4	5	3	95	285
P12 Lance 1					
50A	1	10	8	323	2584
60B	2	5	31	125	3875
60B	3	5	62	31	1922
60B	4	5	4	95	380
P15 Lance 1					
50A	1	12,5	8	323	2584
50A	2	6,3	24	126	3024
60B	3	5	4	95	380
P16 Lance 1					
50A	1	10	6	323	1938
60B	2	5	31	125	3875
60B	3	5	31	31	961
60B	4	5	3	95	285
P17 Lance 1					
50A	1	12,5	8	323	2584
50A	2	6,3	24	126	3024
60B	3	5	4	95	380
P18 Lance 1					
50A	1	12,5	6	323	1938
50A	2	6,3	24	126	3024
50A	3	6,3	24	33	792
60B	4	5	3	95	285
P19 Lance 1					
50A	1	12,5	6	323	1938
50A	2	6,3	24	126	3024
50A	3	6,3	24	33	792
60B	4	5	3	95	285
P20 Lance 1					
50A	1	12,5	4	323	1292
50A	2	6,3	24	136	3264
60B	3	5	2	110	220
P21 Lance 1					
50A	1	12,5	4	323	1292
50A	2	6,3	24	136	3264
60B	3	5	2	110	220
P22 Lance 1					
50A	1	16	6	323	1938
50A	2	6,3	23	126	2958
50A	3	6,3	23	33	759
60B	4	5	3	95	285
P23 Lance 1					
50A	1	10	10	323	3230
60B	2	5	31	155	2945
60B	3	5	31	31	961
60B	4	5	5	95	475
P24 Lance 1					
50A	1	10	4	323	1292
60B	2	5	2	95	190
P25 Lance 1					
50A	1	16	4	323	1292
50A	2	6,3	23	96	2208
60B	3	5	2	95	190
P26 Lance 1					
50A	1	10	6	323	1938
60B	2	5	31	125	3875
60B	3	5	31	31	961
60B	4	5	3	95	285
P27 Lance 1					
50A	1	10	6	323	1938
60B	2	5	31	125	3875
60B	3	5	31	31	961
60B	4	5	3	95	285
P28 Lance 1					
50A	1	10	6	323	1938
60B	2	5	31	125	3875
60B	3	5	31	31	961
60B	4	5	3	95	285
P28 Lances 1 a 2					
50A	1	10	6	220	1320
50A	2	10	6	91	486
60B	3	5	46	125	5750
60B	4	5	46	31	1426
50A	5	10	6	323	1938
60B	6	5	3	95	285

RESUMO AÇO CA 50-60			
AÇO	BIT (mm)	COMPR (m)	PESO (kg)
60B	5	970	149
50A	6,3	356	67
50A	10	393	242
50A	12,5	168	162
50A	16	32	51
Peso Total 60B =			149 kg
Peso Total 50A =			542 kg



PREFEITURA MUNICIPAL DE PONTÃO

PROJETO PISCINA COMUNITÁRIA DE PONTÃO

AVENIDA JÚLIO MAILHOS, 1613
99190-000 - PONTÃO-RS
(54) 3308-1900

PRANCHA: PILAR

LOCAL: TRAVESSA JOAQUIM BORGES ANTIGAMENTE DENOMINADA RUA 5 MUNICIPIO DE PONTÃO-RS

ÁREA: 413,80m²

DATA: JULHO/2022

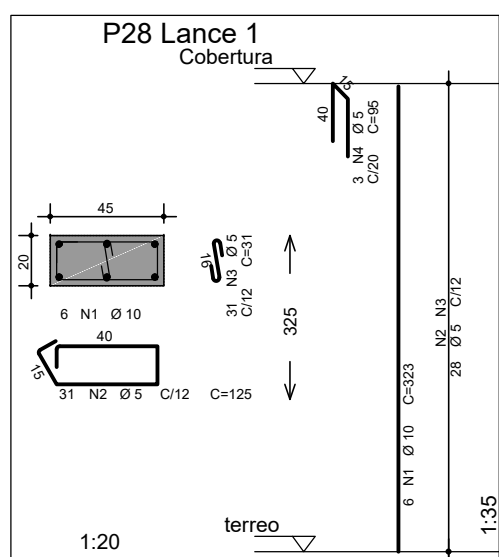
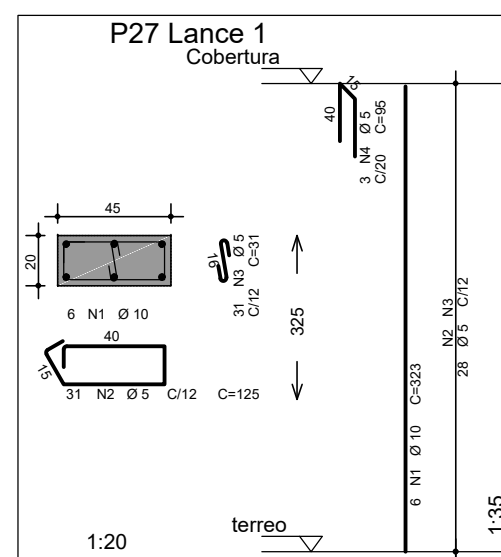
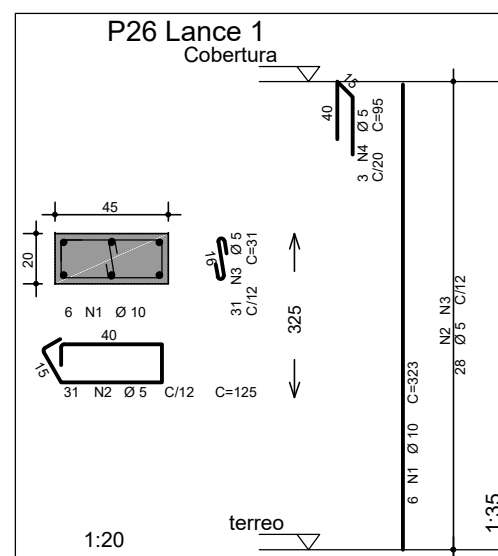
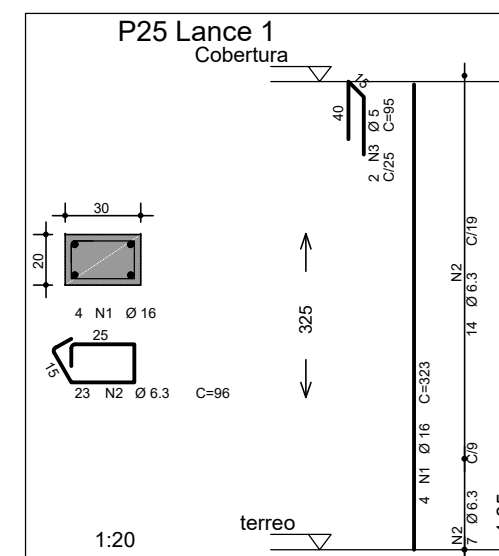
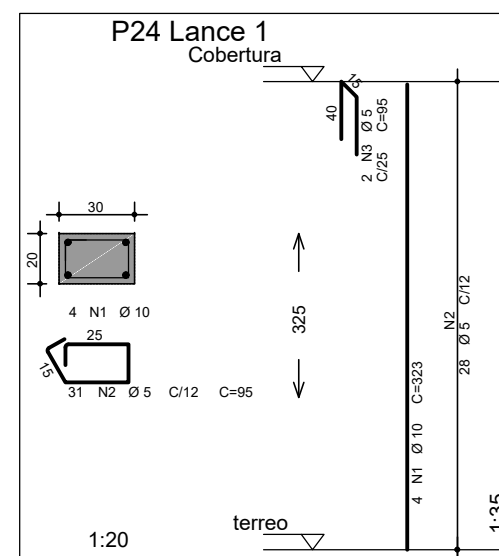
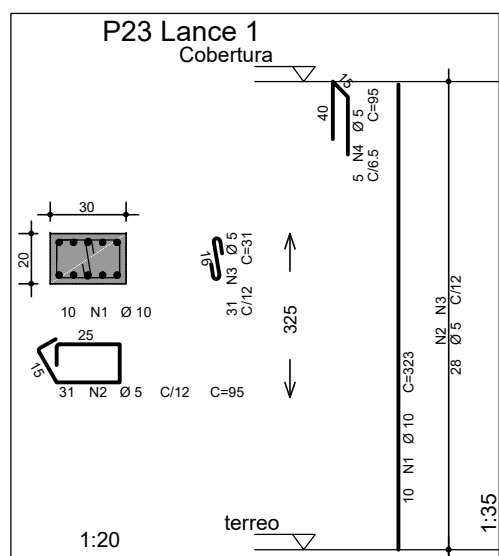
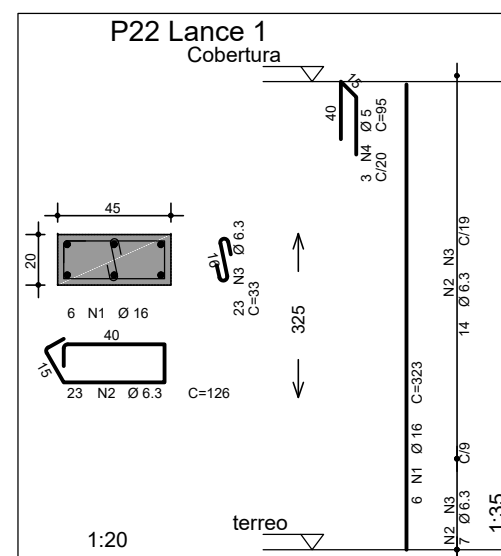
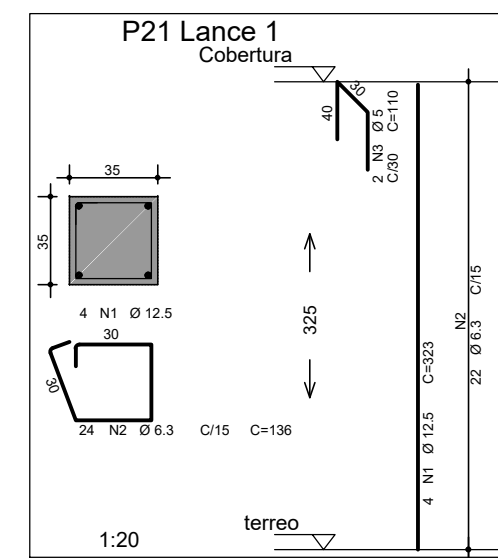
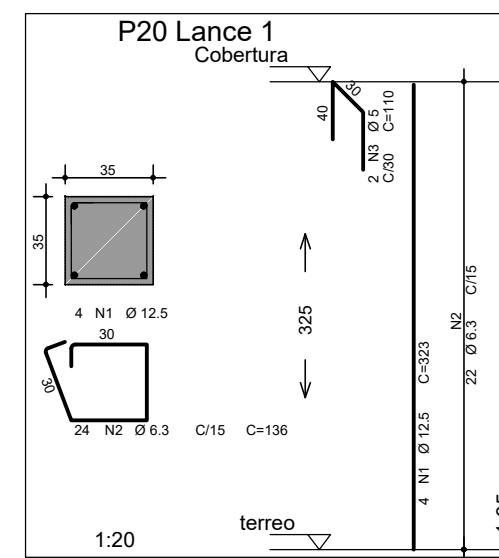
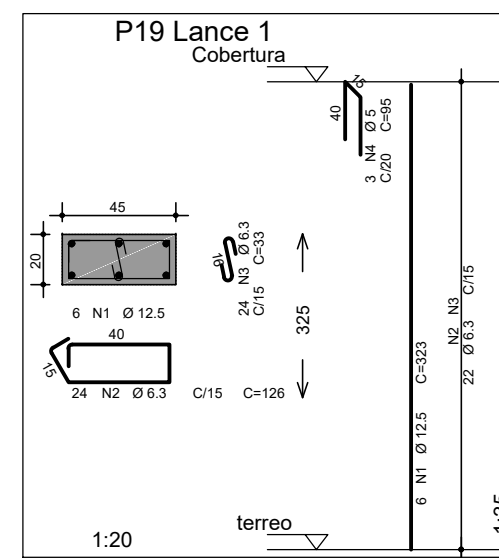
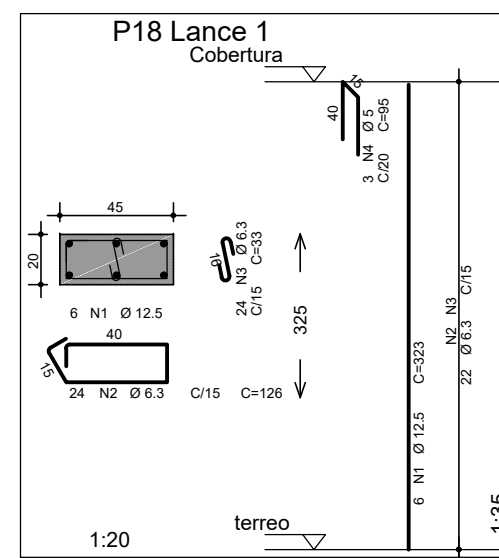
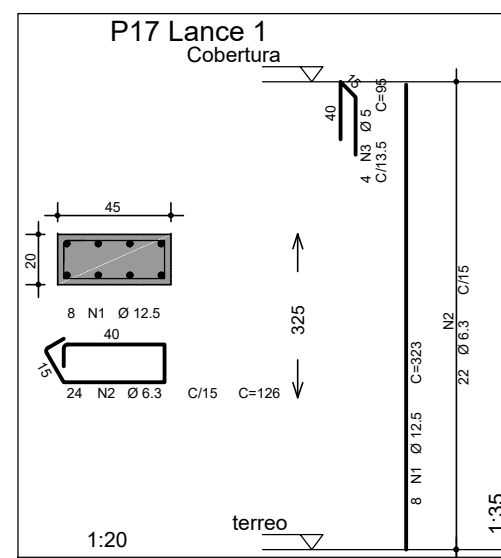
ESCALA: N°: 10/12

PROPRIETÁRIO: VELTON VICENTE HAHN
PREFEITO MUNICIPAL

RESP. TÉCNICO: *Silvio Farias*
ENG. CIVIL SILVIO MARQUES DE FARIAS
CREA RS 208.374
silvionfarias@gmail.com
FONE: 51 9 9742 1877

AÇO	POS	BIT (mm)	QUANT	COMPRIMENTO	
				UNIT (cm)	TOTAL (cm)
P1 Lance 1					
50A	1	10	8	323	2584
60B	2	5	31	125	3875
60B	3	5	62	31	1922
60B	4	5	4	95	380
P2 Lance 1					
50A	1	10	8	323	2584
60B	2	5	31	125	3875
60B	3	5	62	31	1922
60B	4	5	4	95	380
P3 Lance 1					
50A	1	10	8	323	2584
60B	2	5	31	125	3875
60B	3	5	62	31	1922
60B	4	5	4	95	380
P4 Lance 1					
50A	1	10	6	323	1938
60B	2	5	31	125	3875
60B	3	5	31	31	961
60B	4	5	3	95	285
P5 Lance 1					
50A	1	10	10	323	3230
60B	2	5	31	155	4805
60B	3	5	62	31	2863
60B	4	5	5	95	475
P6 Lance 1					
50A	1	12,5	4	323	1292
50A	2	6,3	24	136	3264
60B	3	5	2	110	220
P7 Lance 1					
50A	1	12,5	4	323	1292
50A	2	6,3	24	136	3264
60B	3	5	2	110	220
P8 Lance 1					
50A	1	12,5	8	323	2584
50A	2	6,3	24	126	3024
60B	3	5	4	95	380
P9 Lance 1					
50A	1	10	6	323	1938
60B	2	5	31	125	3875
60B	3	5	31	31	961
60B	4	5	3	95	285
P10 Lance 1					
50A	1	10	6	323	1938
60B	2	5	31	125	3875
60B	3	5	31	31	961
60B	4	5	3	95	285
P11 Lance 1					
50A	1	10	6	323	1938
60B	2	5	31	125	3875
60B	3	5	31	31	961
60B	4	5	3	95	285
P12 Lance 1					
50A	1	10	6	323	1938
60B	2	5	31	125	3875
60B	3	5	31	31	961
60B	4	5	3	95	285
P14 Lance 1					
50A	1	10	8	323	2584
60B	2	5	31	125	3875
60B	3	5	62	31	1922
60B	4	5	4	95	380
P15 Lance 1					
50A	1	12,5	8	323	2584
50A	2	6,3	24	126	3024
60B	3	5	4	95	380
P16 Lance 1					
50A	1	10	6	323	1938
60B	2	5	31	125	3875
60B	3	5	31	31	961
60B	4	5	3	95	285
P17 Lance 1					
50A	1	12,5	8	323	2584
50A	2	6,3	24	126	3024
60B	3	5	4	95	380
P18 Lance 1					
50A	1	12,5	6	323	1938
50A	2	6,3	24	126	3024
50A	3	6,3	24	33	792
60B	4	5	3	95	285
P19 Lance 1					
50A	1	12,5	6	323	1938
50A	2	6,3	24	126	3024
50A	3	6,3	24	33	792
60B	4	5	3	95	285
P20 Lance 1					
50A	1	12,5	4	323	1292
50A	2	6,3	24	136	3264
60B	3	5	2	110	220
P21 Lance 1					
50A	1	12,5	4	323	1292
50A	2	6,3	24	136	3264
60B	3	5	2	110	220
P22 Lance 1					
50A	1	16	6	323	1938
50A	2	6,3	23	126	2898
50A	3	6,3	23	33	759
60B	4	5	3	95	285
P23 Lance 1					
50A	1	10	10	323	3230
60B	2	5	31	95	2945
60B	3	5	31	31	961
60B	4	5	3	95	475
P24 Lance 1					
50A	1	10	4	323	1292
60B	2	5	31	95	2945
60B	3	5	2	95	190
P25 Lance 1					
50A	1	16	4	323	1292
50A	2	6,3	23	96	2208
60B	3	5	2	95	190
P26 Lance 1					
50A	1	10	6	323	1938
60B	2	5	31	125	3875
60B	3	5	31	31	961
60B	4	5	3	95	285
P27 Lance 1					
50A	1	10	6	323	1938
60B	2	5	31	125	3875
60B	3	5	31	31	961
60B	4	5	3	95	285
P28 Lance 1					
50A	1	10	6	323	1938
60B	2	5	31	125	3875
60B	3	5	31	31	961
60B	4	5	3	95	285
P28 Lances 1 a 2					
50A	1	10	6	220	1320
50A	2	10	6	61	486
60B	3	5	46	125	5750
60B	4	5	46	31	1426
50A	5	10	6	323	1938
60B	6	5	3	95	285

RESUMO AÇO CA 50-60			
AÇO	BIT (mm)	COMPR (m)	PESO (kg)
60B	5	970	149
50A	6,3	356	87
50A	10	393	242
50A	12,5	168	163
50A	16	32	51
Peso Total 60B =			149 kg
Peso Total 50A =			542 kg





PREFEITURA MUNICIPAL DE PONTÃO

PROJETO PISCINA COMUNITÁRIA DE PONTÃO

AVENIDA JÚLIO MAILHOS, 1613
99190-000 - PONTÃO-RS
(54) 3308-1900

PRANCHA: PILAR

LOCAL: TRAVESSA JOAQUIM BORGES ANTIGAMENTE DENOMINADA RUA 5 MUNICIPIO DE PONTÃO-RS

ÁREA: 413,80m²

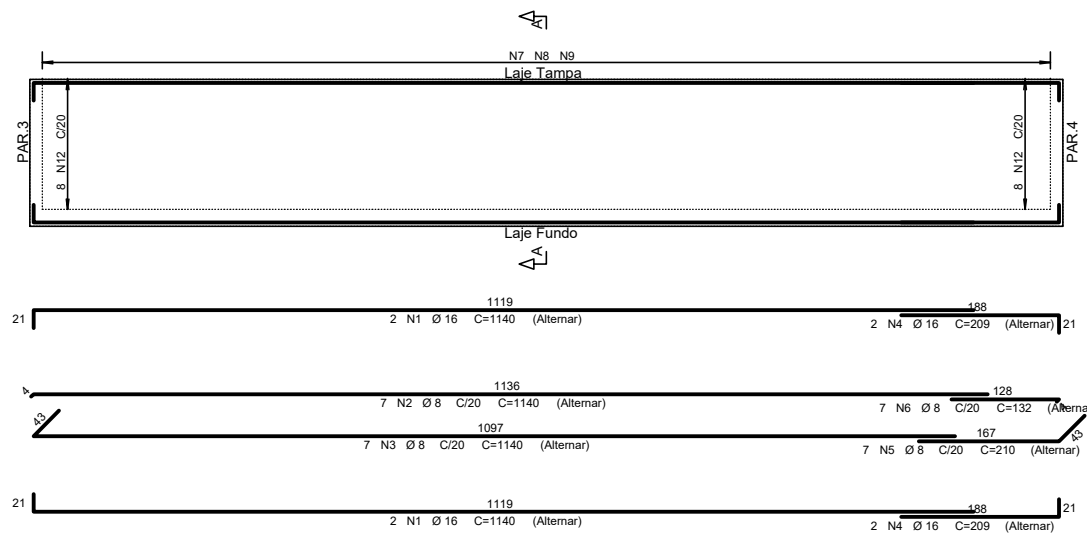
DATA: JULHO/2022

ESCALA: N°: 11/12

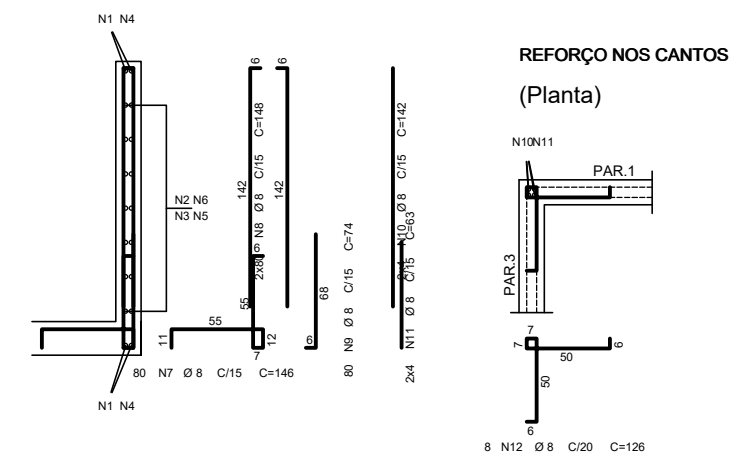
PROPRIETÁRIO: VELTON VICENTE HAHN PREFEITO MUNICIPAL

RESP. TÉCNICO: *Silvio Farias*
ENGR. CIVIL: SILVIO MARQUES DE FARIAS
CREA RS 208.374
silvionfarias@gmail.com
FONE: 51 9 9742 1877

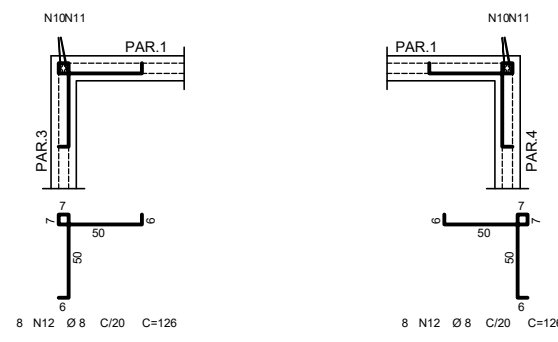
PAR.1 15/175



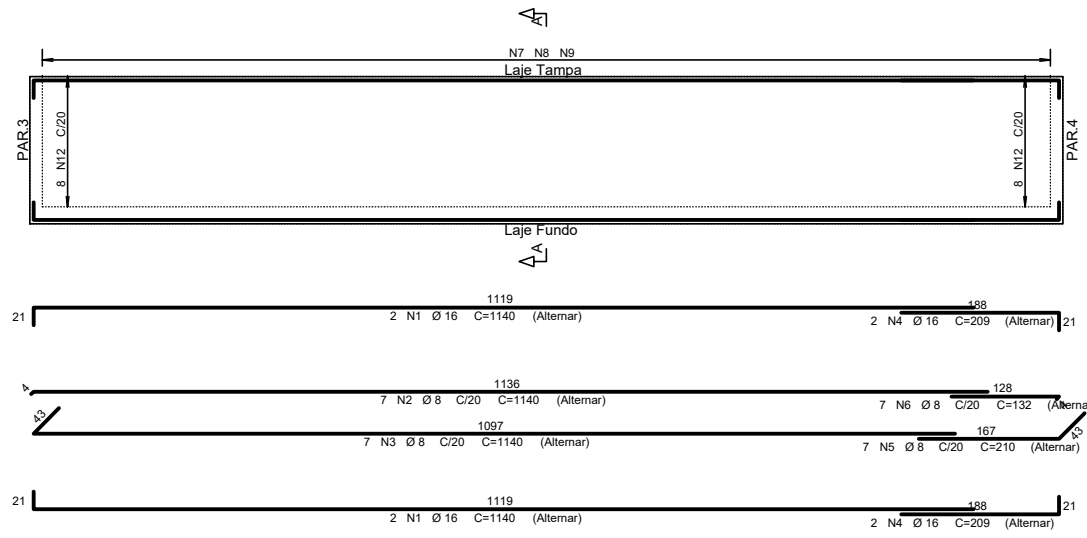
Corte A



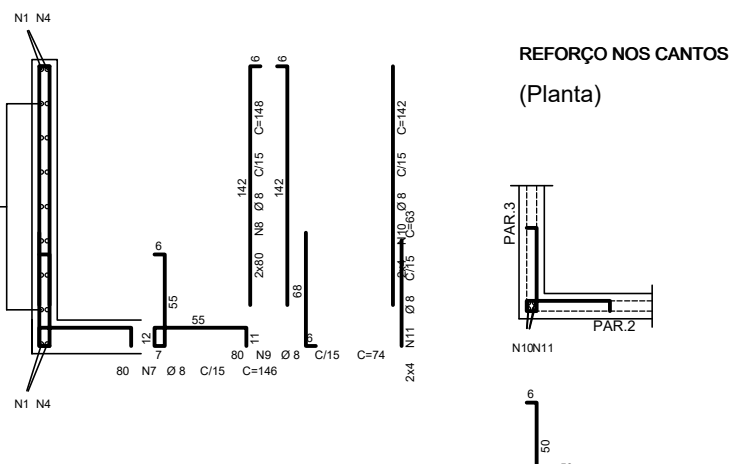
REFORÇO NOS CANTOS (Planta)



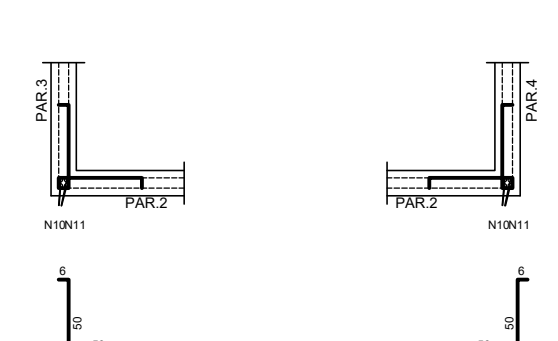
PAR.2 15/175



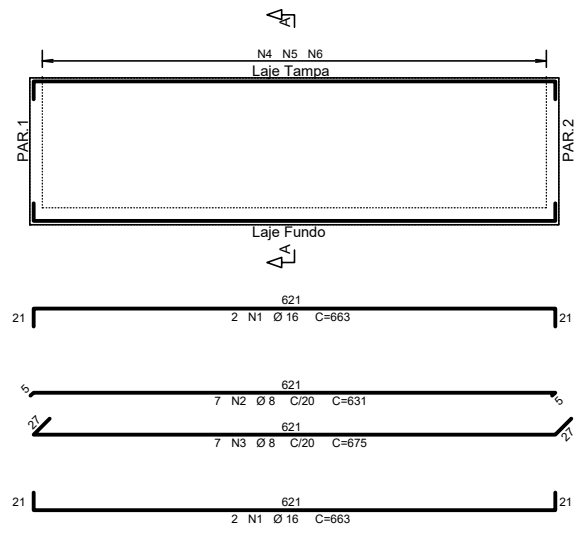
Corte A



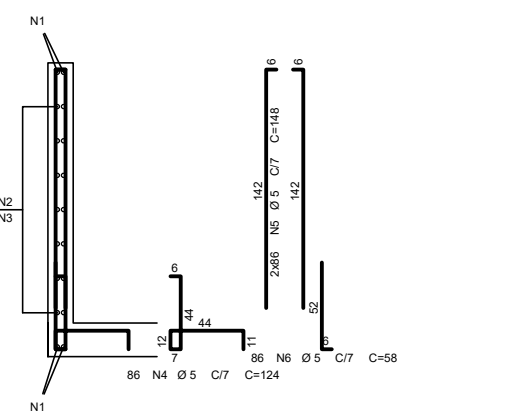
REFORÇO NOS CANTOS (Planta)



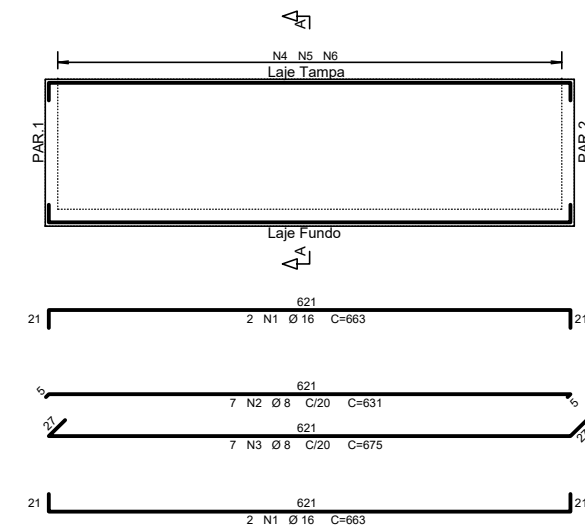
PAR.4 15/175



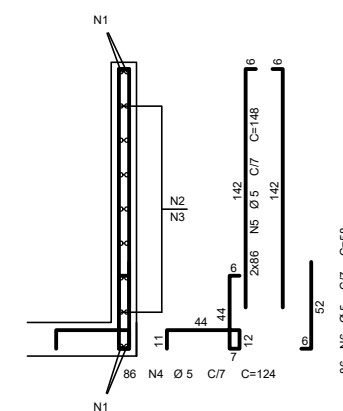
Corte A



PAR.3 15/175



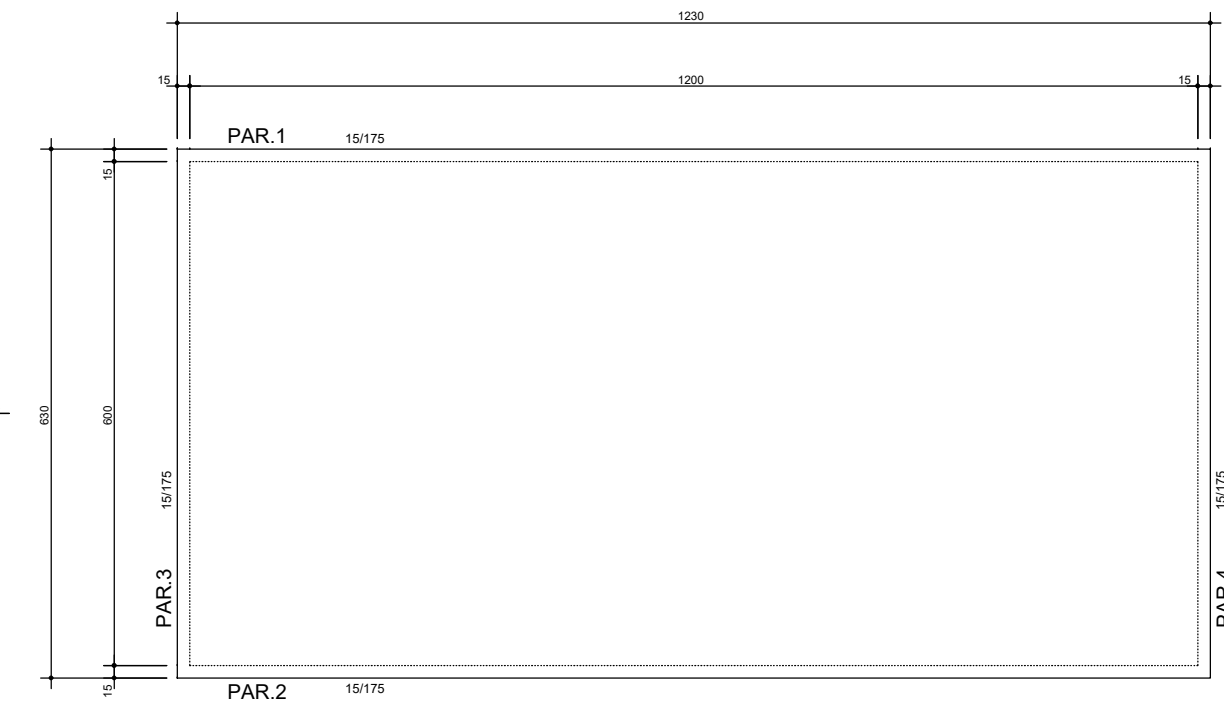
Corte A



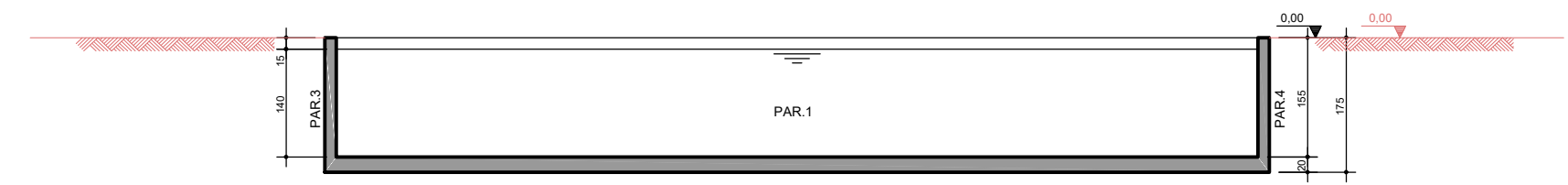
FORMA DO FUNDO DA PISCINA

ESCALA: 1:50

(LAJE h=20cm)



CORTE A-A

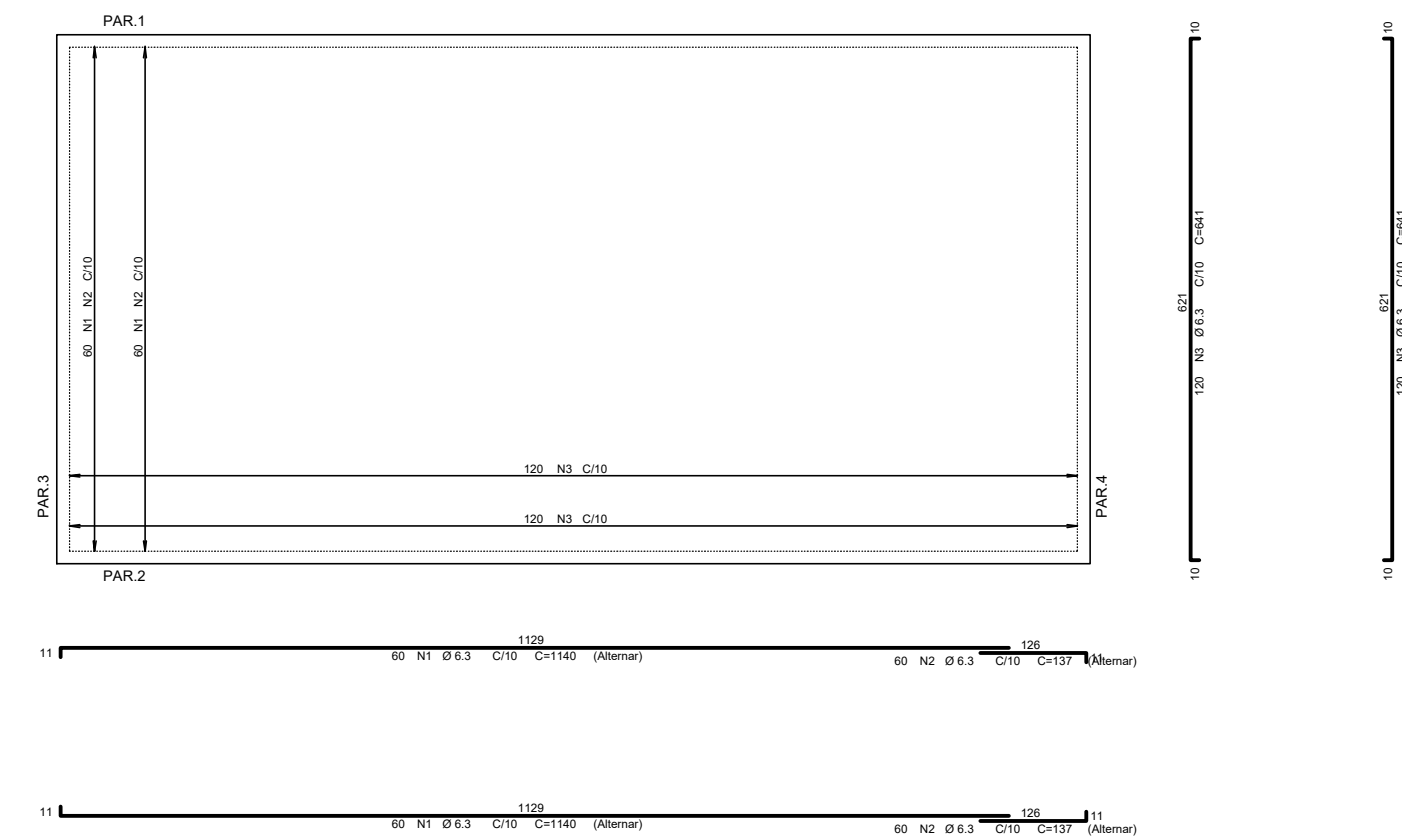


N1 L=esp=3,00

ARMAÇÃO DA LAJE DA PISCINA

ESCALA: 1:50

(LAJE h=20cm)



ACO	POS	BIT (mm)	QUANT	COMPRIMENTO UNIT (cm)	TOTAL (cm)
ARMAÇÃO DA LAJE DA PISCINA					
50A	1	6,3	120	1140	136800
50A	2	6,3	120	137	16440
50A	3	6,3	240	641	153840
PAR.1					
50A	1	16	4	1140	4560
50A	2	8	7	1140	7980
50A	3	8	7	1140	7980
50A	4	16	4	209	836
50A	5	8	7	210	1470
50A	6	8	7	132	924
50A	7	8	80	148	11880
50A	8	8	160	148	23680
50A	9	8	80	74	5920
50A	10	8	8	142	1136
50A	11	8	8	63	504
50A	12	8	16	126	2016
PAR.2					
50A	1	16	4	1140	4560
50A	2	8	7	1140	7980
50A	3	8	7	1140	7980
50A	4	16	4	209	836
50A	5	8	7	210	1470
50A	6	8	7	132	924
50A	7	8	80	148	11880
50A	8	8	160	148	23680
50A	9	8	80	74	5920
50A	10	8	8	142	1136
50A	11	8	8	63	504
50A	12	8	16	126	2016
PAR.3					
50A	1	16	4	663	2652
50A	2	8	7	631	4417
50A	3	8	7	675	4725
60B	4	5	86	124	10664
60B	5	5	172	148	25456
60B	6	5	86	58	4988
PAR.4					
50A	1	16	4	663	2652
50A	2	8	7	631	4417
50A	3	8	7	675	4725
60B	4	5	86	124	10664
60B	5	5	172	148	25456
60B	6	5	86	58	4988

RESUMO AÇO CA 50-60			
ACO	BIT (mm)	COMPR (m)	PESO (kg)
60B	5	822	127
50A	6,3	3071	752
50A	8	1449	572
50A	16	161	254
Peso Total	60B =		127 kg
Peso Total	50A =		1579 kg

PREFEITURA MUNICIPAL DE PONTÃO



PROJETO PISCINA COMUNITÁRIA DE PONTÃO

AVENIDA JÚLIO MAILHOS, 1613
99190-000 - PONTÃO-RS
(54) 3308-1900

PROPRIETÁRIO:

VELTON VICENTE HAHN
PREFEITO MUNICIPAL

RESP. TÉCNICO:

ENG. CIVIL: SÍLVIO MARQUES DE FARIAS
CREA RS 208.374
silvionfarias@gmail.com
FONE: 51 9 9742 1877

PRANCHA: TERREO: ARMAÇÃO DA LAJE DA PISCINA CORTE A-A/ PAR. 1/ PARTE. 2 PARTE. 3/ PARTE. 4

LOCAL: TRAVESSA JOAQUIM BORGES ANTIGAMENTE DENOMINADA RUA 5 MUNICIPIO DE PONTÃO-RS

ÁREA: 413,80m²

DATA: JULHO/2022

ESCALA:

Nº: 12/12